

# RB-S

An ag building that holds its own, on its own.



As far as post-frame buildings go, there isn't a tougher option than the RB-S. This totally engineered building features patented, pre-fabricated braced panels in every corner for added strength. The RB-S is a strong building designed with glu-lam columns in the ground but versatile enough to be attached to a standard concrete foundation. A good choice for agricultural or commercial use, the RB-S is engineered to withstand winds up to 105 mph in the harshest conditions, and is built to C-exposure. Engineered with quality products, innovation, and the highest safety standards, the RB-S is hands-down the best pole barn on the market. The RB-S is perfect on the farm, for other ag applications and great for storage.

---

***"Through value engineering, CMC Reaves' ideas saved our project tens-of-thousands of dollars with better and faster solutions."***  
***— Spencer Finseth, Former Director of Construction at Greiner Construction***

---

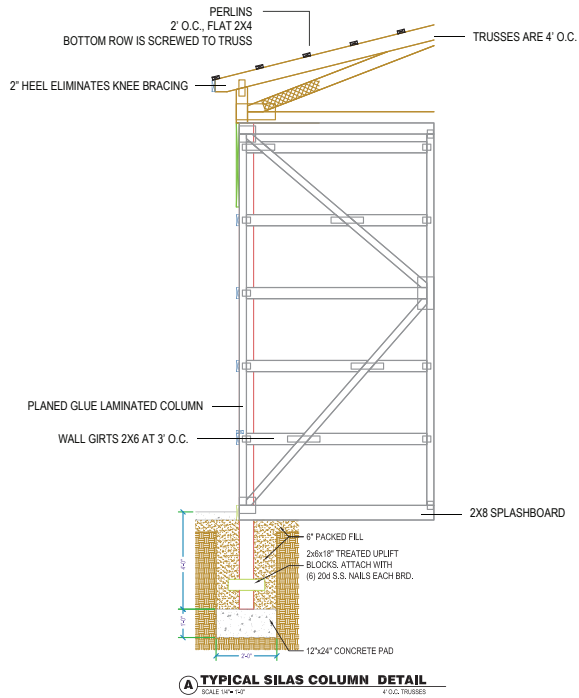
4101 North 4th Avenue  
Sioux Falls, SD 57104  
Mailing address: PO Box 84808  
Sioux Falls, SD 57118-4808

Phone: 605.339.3647 or  
800.658.3572  
Fax: 605.335.0494  
E-mail: [info@reavesbuildings.com](mailto:info@reavesbuildings.com)

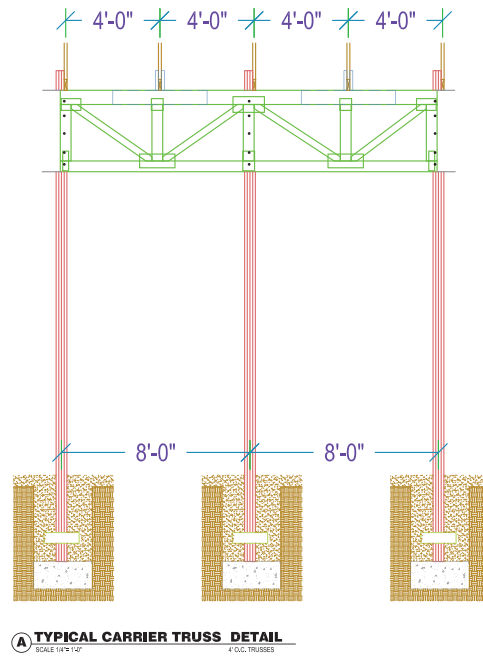
- Building uses in-ground columns or sits on concrete
- Machine Stress Rated (MSR) lumber is used where needed
- Purlins fit between top chords on 8' oc truss spacing and over the top of trusses with 4' oc truss spacing
- Grade and size of girts and purlins determined by engineering
- Built to withstand 105 mph winds, C-exposure and snow loads designed to meet or exceed local building codes
- Clear spans up to 120 feet wide
- No height restrictions
- 4, 6 or 8 foot on-center columns and trusses depending upon span
- Columns can be placed 4 or 8 feet apart depending on customer need
- A 2-foot energy heel eliminates cold spots in the building eliminating the need for knee bracing
- Two options are available for the RB-S. RB-SW is a wrap, and RB-SB is a bookshelf

# Silas Detail

## Patented Brace Panel Detail



## Carrier Truss Detail



## Building Detail



These drawings are the property of Reaves Building Systems. Any unauthorized use of the ideas and designs presented here is strictly prohibited